

UPCOMING WEEKS

RUN TIMES

PLEASE SEE THE SCHEDULE FOR VOLUNTEER NEEDS

SOME LIKE IT HOT

Connor Palace Theatre || 155 min. w / I
November 5 – 24

THE CHERRY ORCHARD

Helen Lab || approx. 120 min.
November 6 – 16

DAVID NIHILL

Hanna Theatre || approx. 90 min.
November 15

KEVIN HART

KeyBank State Theatre || approx. 120 min.
November 15 – 16

CHURCHILL

Hanna Theatre || approx. 120 minutes
November 17

JON STEWART

KeyBank State Theatre || approx. 90 min.
November 22

A CHRISTMAS CAROL

Mimi Ohio Theatre || 120 minutes w / I
November 23 – December 22

BLACK NATIVITY

Hanna Theatre || 120 minutes w / I
November 30 – December 15

A JOLLY HOLIDAY WITH THE CLEVELAND POPS

Connor Palace Theatre || 140 minutes w / I
December 1

GUEST EVACUATION TRAINING

- [SU 11/24 9:45 AM](#)
- [MO 12/9 5:45 PM](#)
- [SA 12/14 9:45 AM](#)

D is for DECEMBER D is for DOUBLE HOURS!

The December calendar is packed with performances!
We have concerts!
We have shows!
We have so much going on!



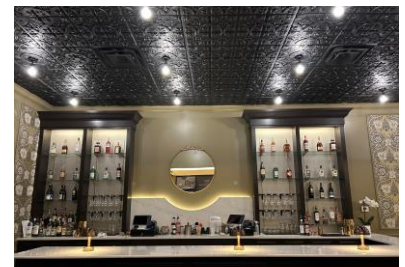
As our thanks to you, our fabulous volunteers, **ALL** performances during the month of December will be **DOUBLE HOURS!**

MOST teams will be scheduled more than twice during December. Remember – the volunteer commitment is two performances each month. **IF** your team is scheduled more than twice, and you are unable to attend, you can request to be released from a performance by emailing redcoats@playhousesquare.org.

NOW OPEN:

The Brasserie and The Bulkley Bar

Located inside the Bulkley Building at 1501 Euclid Ave., Playhouse Square transformed two existing spaces to create **The Brasserie** and **The Bulkley Bar** with designs celebrating the ambience of the historic building. The Brasserie features homemade pastries, sandwiches, and unique desserts, while The Bulkley Bar offers specialty cocktails, wines and other pre- and post-theater drinks. For more information on each venue's operating hours, visit [Playhouse Square Dining](#).



Please remember – tables and chairs are for patrons of The Brasserie and The Bulkley Bar.